

DIRECTIONS TO

=====

Western Reserve Controls
1485 Exeter Rd, Akron OH.
330-733-6662 (phone)
330-733-6663 (fax)

We are at the **Lockheed Martin** facility (old Goodyear/Loral Aerospace); plant D, south of Akron. It just a few yards due south of the air dock, south of the **Akron Fulton (muni.) Airport** and SW of the **Akron Rubber Bowl** and the **Soapbox Derby** site.

From Akron and Cleveland

- Take I-77S through Akron, past I-76, to Rt. 224E, exit 122A (Left side exit, about 2-1/4 mi south of I-76 in Akron).
- Follow the "ALL" directions below.

From Cleveland Hopkins Int'l Airport

- Take I-480 East to I-77 South
- Follow I-77S through Akron, past I-76, to Rt. 224E, exit 122A (Left side exit, about 2-1/4 mi south of I-76 in Akron).
- Follow the "ALL" directions below.

From Canton and Canton/Akron Airport

- Take I-77N to Rt. 224E, exit 122 about 2-3 miles north of the Arlington Rd exit.
- Follow the "ALL" directions below.

From Lodi and Columbus

- Take I-71N to I-76E.
- Follow I-76E to I-277E / Rt. 224E just outside Akron.
- Follow Rt. 224 / I-277E (I-76 splits off to the north).
- I-277 ends at the I-77 merge (about 4 miles).
- Proceed past the I-77 to the Kelly Avenue exit (1/2 mile).
- Follow the "ALL" directions below.

From Cleveland East suburbs and NW Summit County

- Take I-271S to Route 8.
- Take Rt. 8 South into Akron.
- Rt 8 ends and merges into I-77S.
- Take I-77S to Rt. 224E, exit 122A (left side exit, about 2-1/4 mi south of I-76 in Akron).
- Follow the "ALL" directions below.

From Kent, Youngstown and East

- Follow I-76 into Akron.
- Connect to I-77S in Akron.
- Take I-77S to Rt. 224E, exit 122A (left side exit, about 2-1/4 mi south of I-76 in Akron).
- Follow the "ALL" directions below.

DIRECTIONS TO

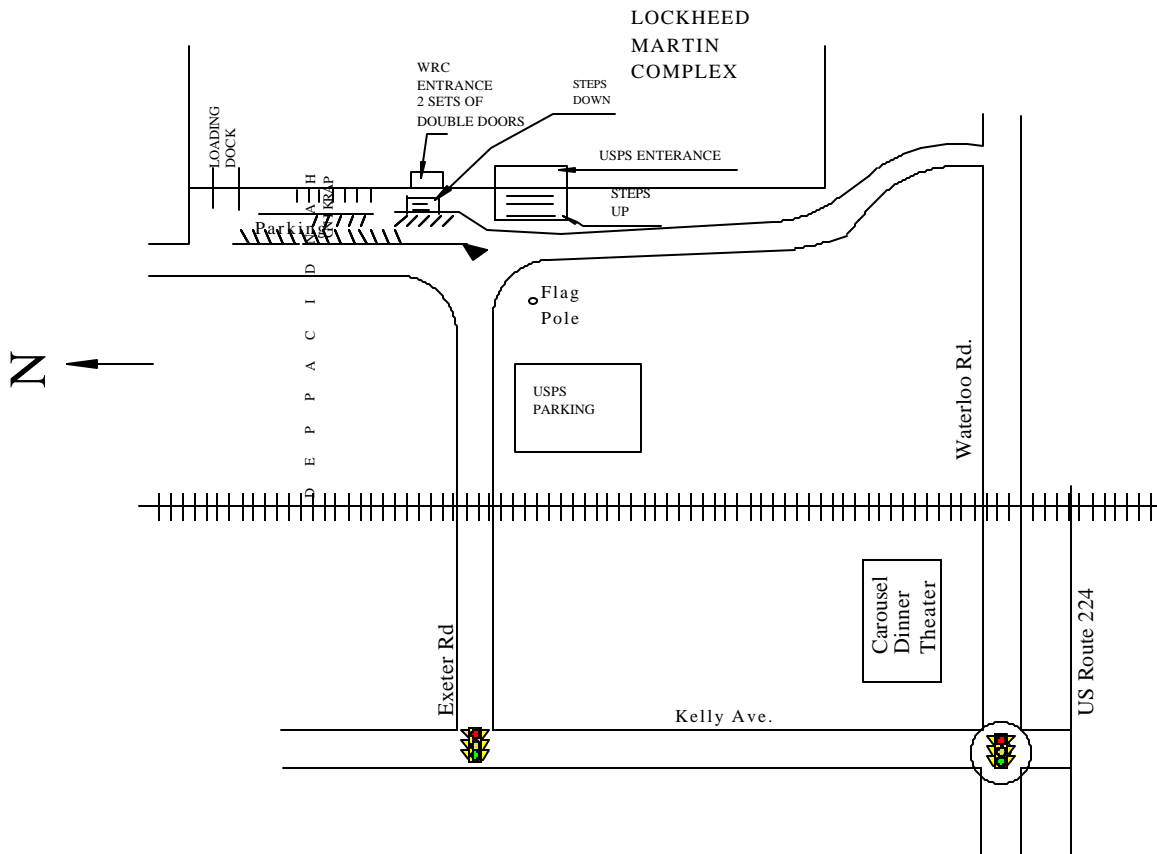
**Western Reserve Controls
1485 Exeter Rd, Akron OH.
330-733-6662 (phone)
330-733-6663 (fax)**

ALL

- Go about **1/2 mile East on Rt. 224** to the **first exit - Kelley Ave.**
- Turn **left on Kelly** (north).
- Go past the 1st light - Waterloo Rd/ Emmitt Rd. (The Carousel Theater is on the NE corner.)
- The next light is Exeter Rd (about 1/8 mile).
- Turn **right (east) onto Exeter.**
- As you drive down Exeter, look at the **large building at the end of the drive.** You will see a **gray vertical stripe in the siding.** WRC's entrance is directly underneath that gray stripe.

Our parking area is on the other side of a yellow barrier.

- If you look straight ahead at the building, our entrance is right there.
- There are 2 sets of **double glass doors located underneath a gray vertical stripe.**
- There is a large white Imperial Electric sign above the door.
- There is a green sign on the wall - "Western Reserve Controls Visitors Entrance"
- Go **thru the double glass doors into the lobby and enter the first suite on the right.**



NOT TO SCALE