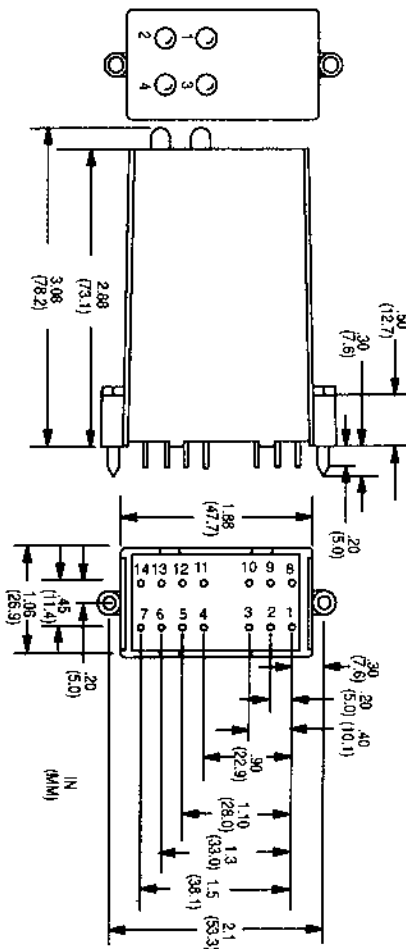


1781-Series Quad Modules are available in all of the field voltages as the 1781-Series of Slim Modules or the WRC4-Series of modules. They provide four I/O circuits in one package with an integral LED for each circuit.

The 1781-Series of Quad I/O Modules are compatible with the de facto industry standard footprints, however, attention should be given to applications where dc inputs and outputs are involved to confirm the proper polarity. Different vendors have implemented these functions in different ways. WRC offers several different versions allowing the user to meet the polarity needs for your application. Refer to the application notes section of the catalog which discuss sourcing and sinking applications.

UL recognized, CSA certified and CE compliant are standard.

Quad input modules



Quad output modules

